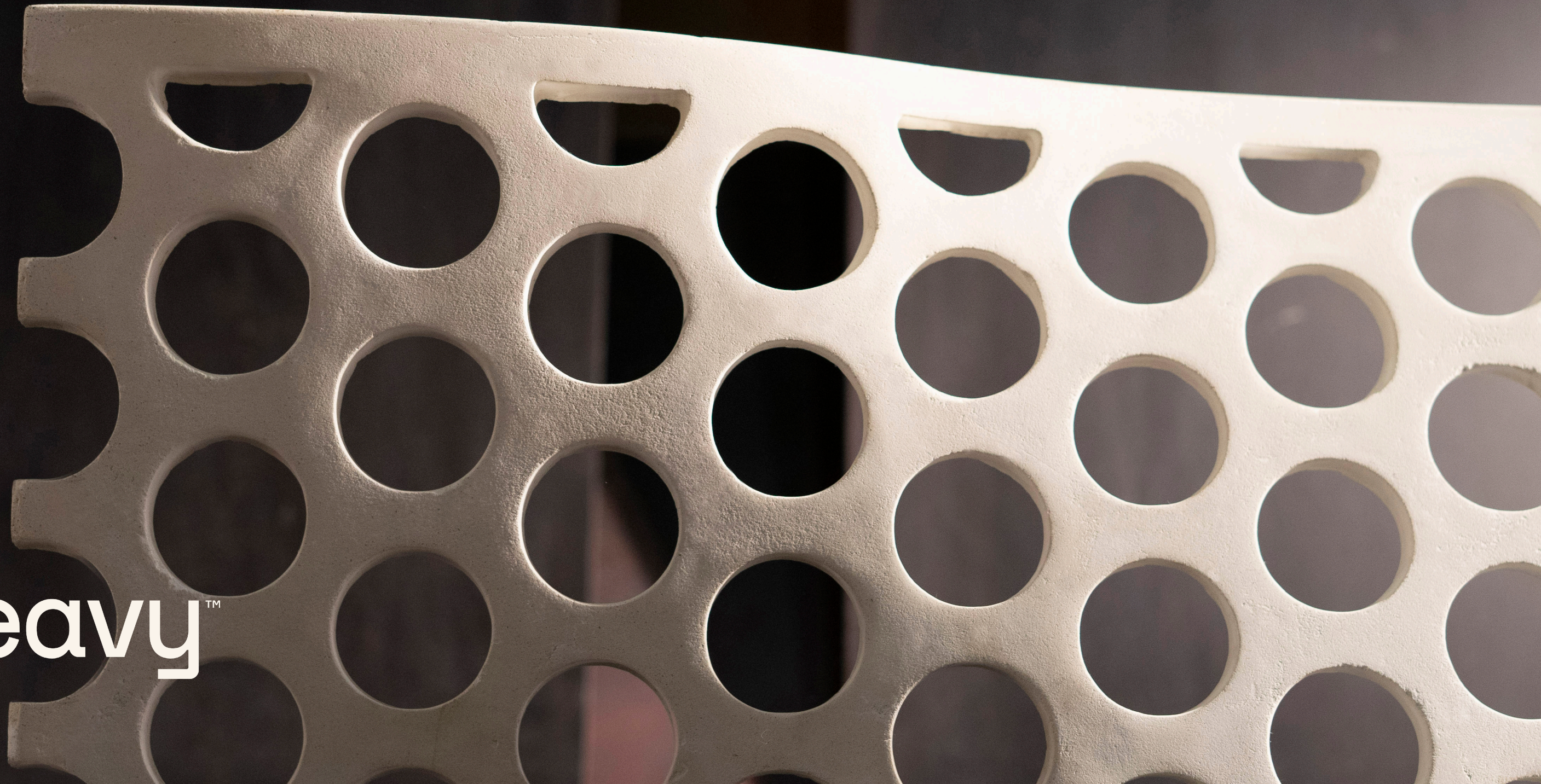


BE BOLD—TOGETHER.

CLOUDCRETE

Heavy™



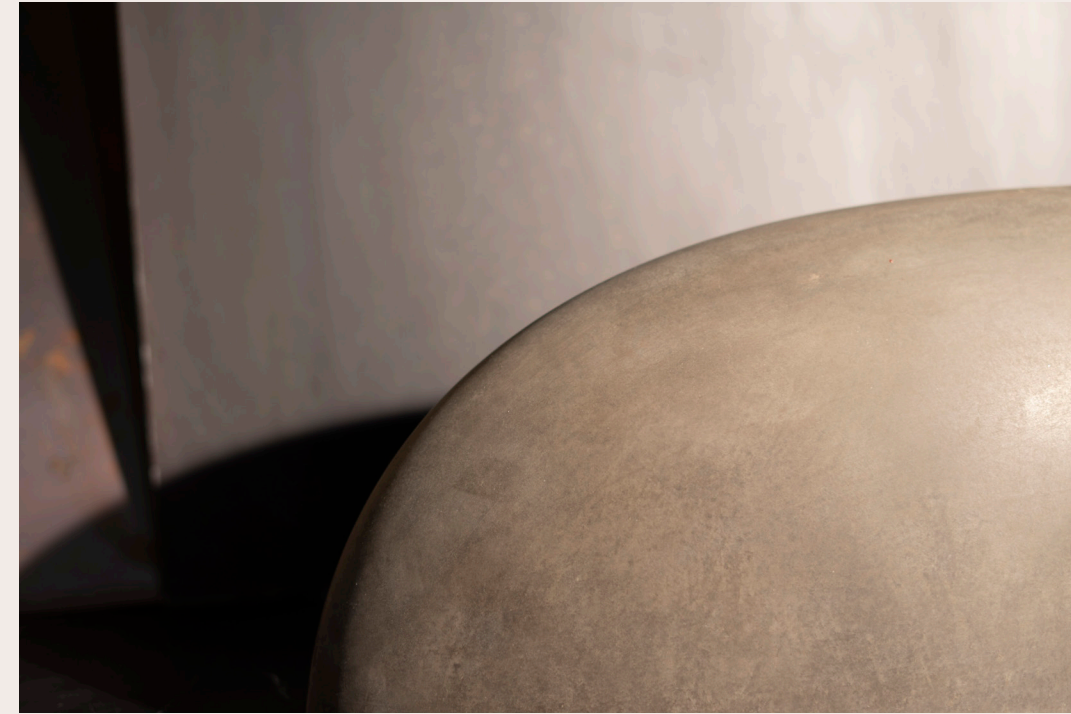
What sets Cloudcrete apart?

Leverage unprecedented creative freedom without the risk and cost.

Cloudcrete is a versatile, lightweight concrete solution, developed in digital space and intended for both exterior and interior applications. It is tailored for designers looking to achieve complex, organic shapes via a durable, controlled concrete building material. Whether designing interactive landscapes, architectural elements, or unique art works, Cloudcrete can provide the solution.

Leveraging digital 3D modeling and physical prototyping during the consultation and optimization phase ensures the color, finish, texture, geometry and overall approach meets the design intent. Cloudcrete components can be easily integrated into multi-material design schemes with fully engineered connection details and proven material testing data for our proprietary mix design.

Whether your project requires one unique piece, or many incorporated into a greater whole, Cloudcrete can be adapted to meet any volume requirements. Cloudcrete is more than concrete; it is a versatile resource in your material palette providing the design freedom to take big risks with the certainty of a tried and tested product.

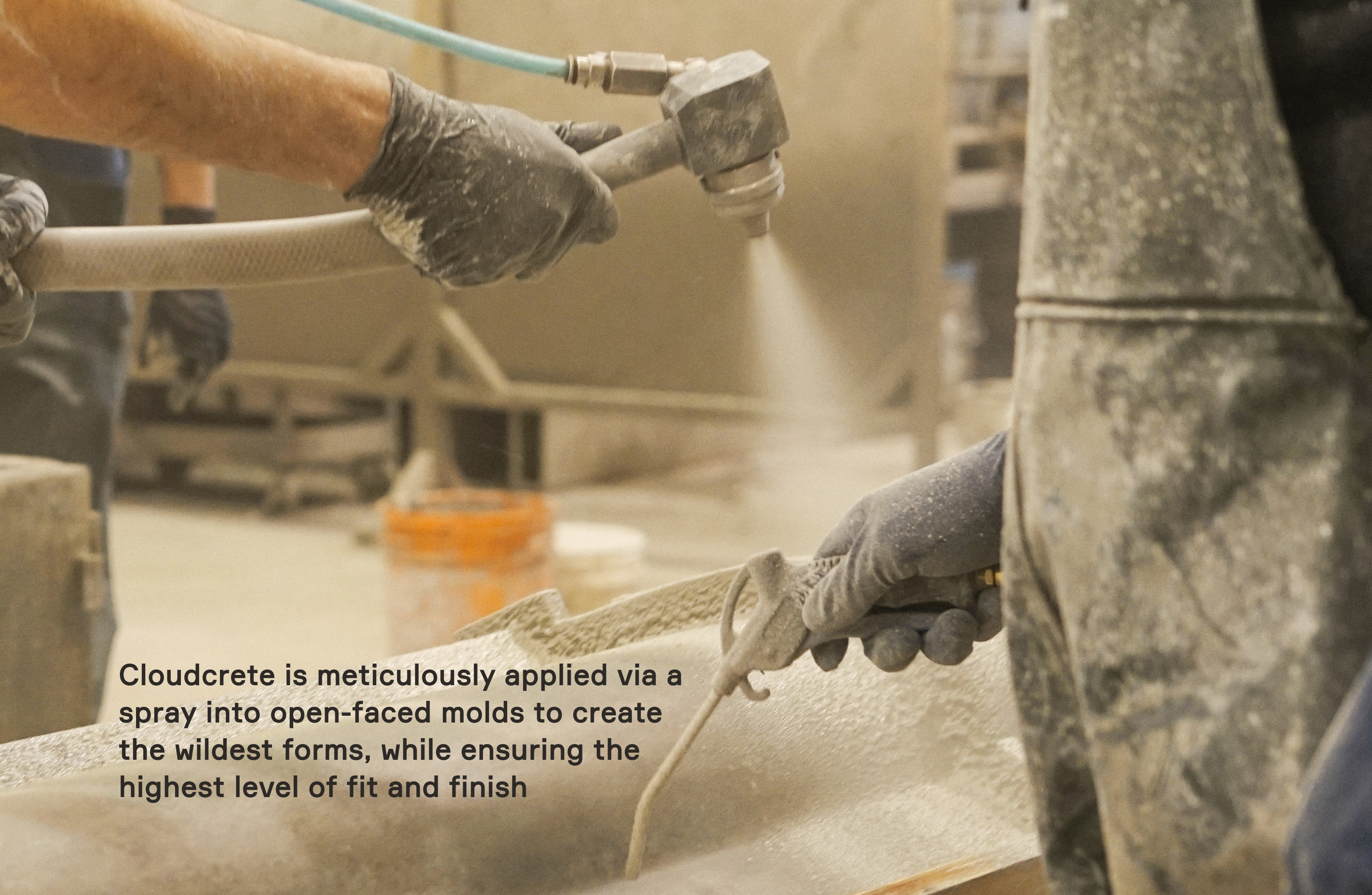


— CLOUDCRETE



Cloudcrete is the next step in the evolution of concrete. It is a versatile tool at the disposal of designers looking to accomplish innovative geometric forms.





Cloudcrete is meticulously applied via a spray into open-faced molds to create the wildest forms, while ensuring the highest level of fit and finish

How does Cloudcrete come to life?

At it's most basic level, Cloudcrete is a sprayed, mold-formed, shell-like concrete product. It consists of a curated mix of concrete, alkali resistant chopped glass strand, water, sand, and polymer. Our engineer approved and tested Cloudcrete mixture allows for glass fibre strands to take the place of the rebar used in typical in concrete products.

In order to achieve the best result, each casting surface is prepped with a non-invasive mould release agent. Once prepped, the facecoat concrete mixture can be applied via spray. The thin facecoat does not contain strengthening fibres in order for the exposed surface to achieve the desired aesthetic.

After the facecoat has had time to partially cure, there is a window in which the remaining 1/2" - 1" thick layer of concrete and chopped glass fibre mixture can be applied while forming a strong bond with the initial facecoat. This thin materiality, relative to pre-cast concrete, is where Cloudcrete shines as an alternative. Embedded knifeplates or ferrule connections are then cast in to allow easy connection to external framework.

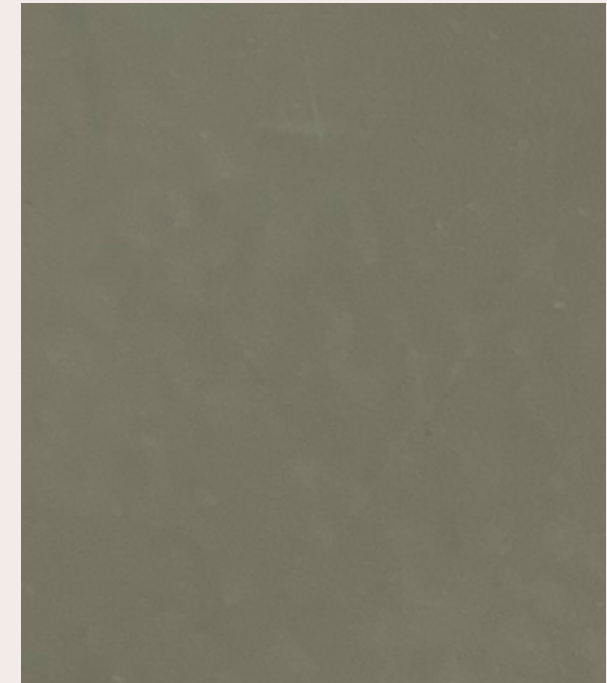




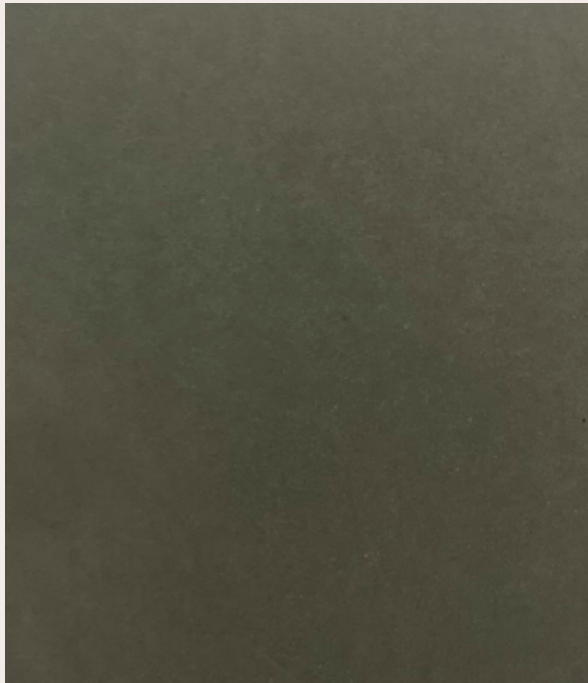
001 — Charcoal



002 — Cloud White



003 — Portland



004 — Stone Grey



Custom colours, finishes and textures available

Why Cloudcrete?

Cloudcrete has been developed by the Heavy team based on our knowledge and real-world experience planning and building innovative and boundary-defying projects.

With a combined 25+ years of experience working with Cloudcrete, we have honed our craft to the point where we now have an undeniably effective and customizable product. This is backed up with proven engineering data and standard colours and finishes, making it easy to specify for an unlimited variety of complex, ambitious applications.

When combined with Heavy's PLAN—BUILD™ process and digital parametric design, the full potential of Cloudcrete can be unlocked, enabling designers, architects and visionaries to create unprecedented geometric forms with certainty and efficiency.

The possibilities are endless, and we look forward to working with you to bring your vision into reality.

CLOUDCRETE



Find out how Heavy's Cloudcrete can help turn your placemaking vision into reality by visiting www.heavyexperience.com

CLOUDCRETE